

I made myself a "tool" to assist with the task of threading the INSIDE O-ring onto the glove-side ring. I took a cap for 4" ABS, cut about a 3/4" ring off the end, cut a groove into it, sliced it so it can be smooshed and there it is. I've also found what makes this whole process easier is a little O-ring lube.



Lube up the O-ring and smoosh the tool and slide the O-ring onto the tool into the O-ring groove.



Installing the O-ring onto the tool is the first part of the drill that will take some practice. When it's on, it should look like this:



Next up, getting the tool into the glove and preparing for the glove-side ring.

Carefully slide the loaded tool into the glove as far as you can. With a new glove, this will usually be about 1/2" to 3/4" or so.



Next step is to spin the loaded tool 90 degrees. Be very careful not to let the O-ring slip off of the loaded tool. Once you've successfully spun the tool, you're about 1/3 of the way done. Note the bump at 11:00 - that's the overlap of the smooshed tool. Take a deep breath, as now it gets dicey.



This is what it looks like inside. Notice the tool overlap.



You need to now open the tool. Remember how you smooshed it to load it? Now it's time to pull it open. Grab the tool on each side of the overlap, put your thumbs together, grab the tool and pull it open until you feel that very satisfying "SNICK!" That "snick" means the tool is together.

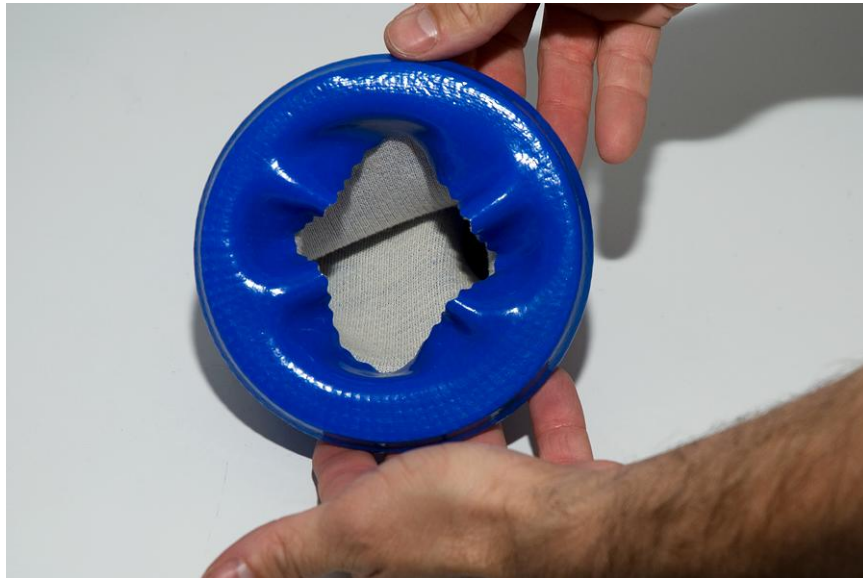


This is what's going on inside the glove when you pull open the tool.



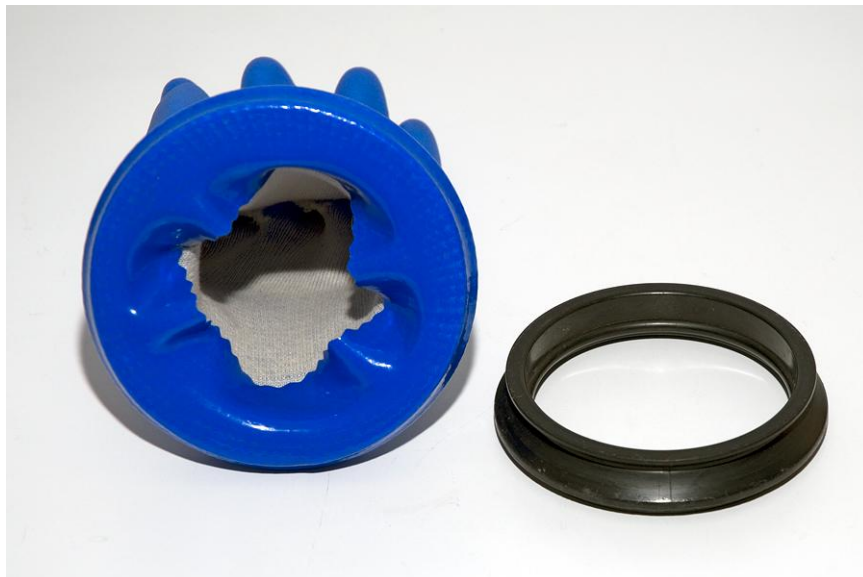
With the tool opened successfully and the O-ring still in the groove, you have completed the part that flummoxes most users of the tool. At this point, the glove will look very taught over the tool. BUT - there usually isn't enough material pulled over the tool (to the glove opening) to effectively grab the O-ring.

Before moving to the next step, you need to slowly and carefully pull some material over the tool without dislodging the O-ring from the tool. I do this by pulling the glove material UP, then OVER the tool, whilst using my thumb to keep the O-ring in place. **THIS IS THE STEP** where a careless tug will send you back to step 1. Be careful here. Be slow. Take your time.



Next up, mounting the O-ring onto the Glove-side ring.

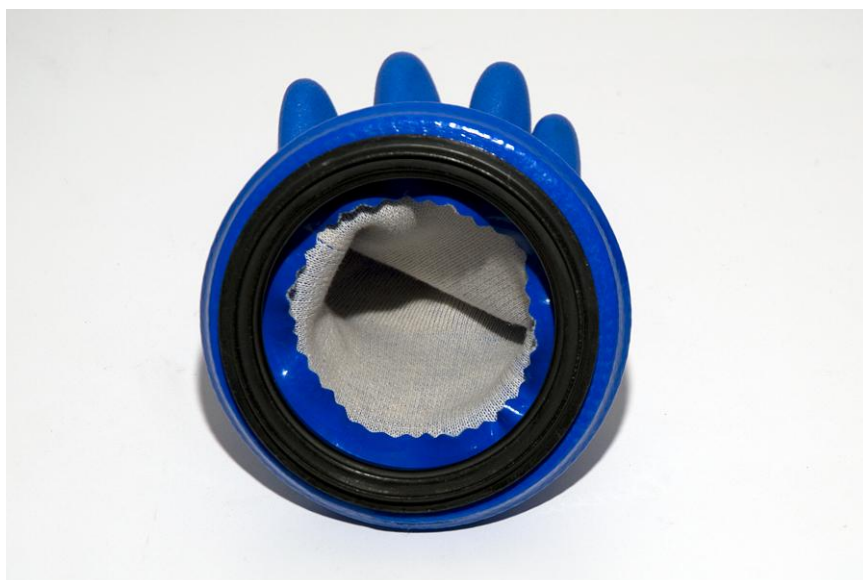
With the loaded tool now expanded into the glove, it's time to grab the glove-side ring and slowly and carefully slide the O-ring from the tool to the groove on the glove-side ring.



Insert the glove-side ring into the glove. Pay attention to insert it the correct way! This is the easiest step of the process. On the way in it will fold back the glove material and will set up the next step.



Glove-side ring in glove!



This is the O-ring on the loaded and expanded tool.



Now you need to slide off the O-ring from the loaded and expanded tool on to the waiting glove-side ring. This is a simple process, but once you start the slide you need to complete the operation. Just take a nail and slide it off, turning the glove as you go. It will slide off perfectly onto the waiting glove-side O-ring, pinching the under-turned glove material. Note the left hand index finger keeping the tool on top of the glove-side ring. These two items need to remain very closely together throughout the slide off and spin.



Properly installed O-ring. When the O-ring is slid off the tool onto the groove of the glove-side ring, you'll hear a little snap, signaling the end of this step. DO NOT TUG ON THE GLOVE or you can unseat the O-ring.



A closer shot.



Next up - removing the tool, installing the beauty ring and, if needed - custom sizing the glove.

You now have the O-ring properly placed onto the glove-side ring. It's time to remove the still-expanded tool from the glove.

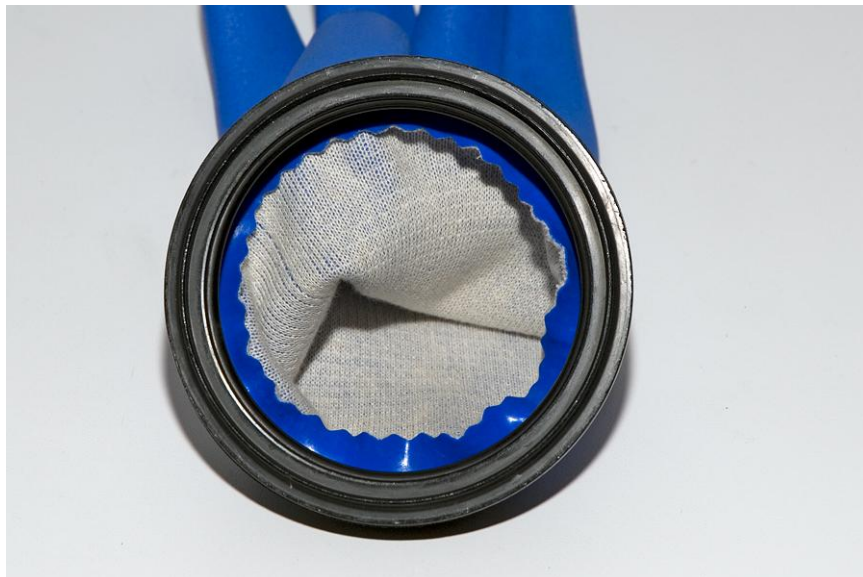
I locate the break in the tool, and simply give it a twist from the inside. This will effectively curl the tool out of the glove, starting the process of removal.



Now you just spin the tool out of the glove - when you reach the end, just separate the tool and lift it off the glove.



If you've been careful, and taken your time, you'll see a very even and symmetrical distribution of glove material around the inside of the glove-side ring when you look into the glove.



CUSTOM SIZING

I have two suits. On the primary suit, the sleeves are a bit too long. On the back up suit, I have Zip seals. The net is this: I need to use shorter "hamburger helper" type gloves to have them fit comfortable.

It is easy to change the overall length of the glove - once you've finished the install (and before you install beauty ring) you need to firmly and slowly tug the material to shorten the glove. Just work in a circle, making slow firm tugs and the glove will get shorter and shorter. Size to fit.